
Contents

Process map

Tour 2 [Integrated Management system](#)

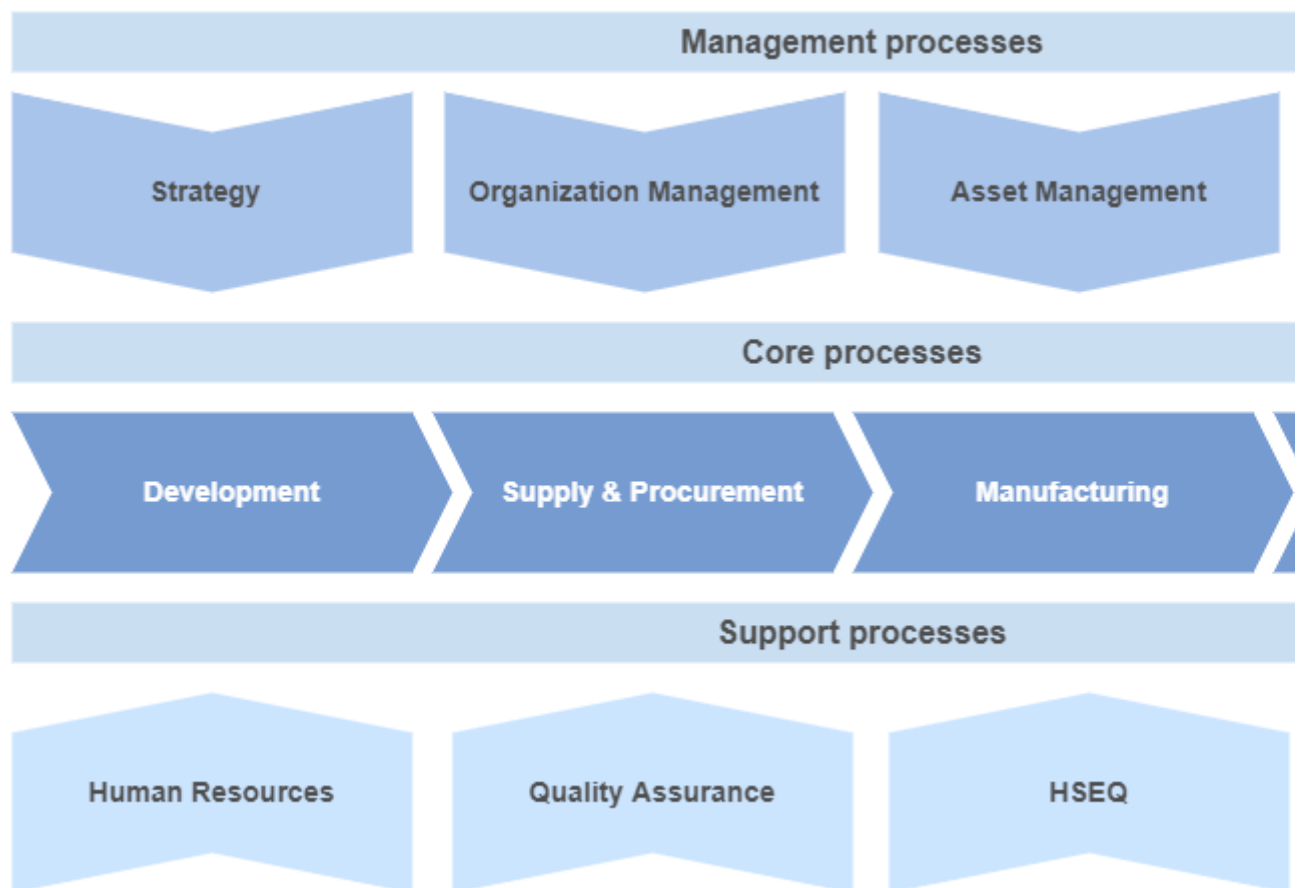
next: [Flowchart](#)

This process map is created using the in BlueSpice integrated app [draw.io](#). You can change the diagram by clicking the [Edit](#) link above the image. After editing the diagram, click [Save](#) and then [Exit](#) in the draw.io app.

Tip: Use the fullscreen mode toggle of this page.



Drawio diagram



Tour 2 [Integrated Management system](#)

next: [Flowchart](#)